

Rixson Uni-Chek Offset Floor Closers and Duo-Chek Center Hung Floor Closers are recommended for low and medium traffic interior doors where concealment of the door closing means is desired.

Models 10, 12, 15, 16 Duo-Chek Floor Closers

Duo-Chek Closers are center hung, double acting and fully concealed.



MODEL	DOOR SIZE	WEIGHT	FEATURES
10	2'6" - 6'10" x 7'0" x 1-3/4"	125 lbs.	AHO-90°
12	2'6" - 6'10" x 7'0" x 1-3/4"	125 lbs.	NHO
15	2'11" - 3'6" x 7'0" x 1-3/4"	125 lbs.	AHO-90°
16	2'11" - 3'6" x 7'0" x 1-3/4"	125 lbs.	NHO

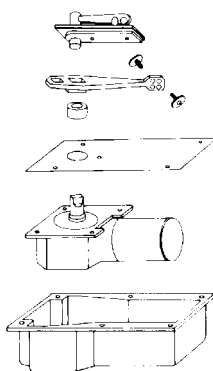
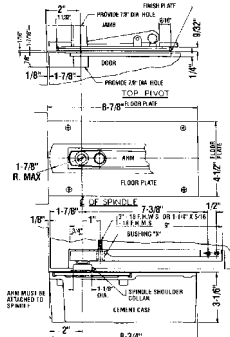
Features

- Double acting and non-handed.
- Not allowed for use on labeled fire doors and frames.
- Intermediate pivots are not used with center hung floor closers.
- Models 10 and 15 are available in 90° automatic hold-open; 12 and 16 are NHO only.
- Steel cement case.
- Adjustable closing speed and centering adjustment.
- Can swing to 105°.
- Extended spindle available in 1/2" increments to 2"; standard clearance 5/8".
- Standard top pivot 101020 walking beam type.
- Not available: SC, DA, CWE
- For A.D.A. compliance of 5-pound opening force, specify PH10 hold open closer, and PH12 for non-hold open closer.
- Finish: 605, 606, 612, 613, 625 and 626.

Ordering Information

Complete Duo-Chek Closers include:

Top Pivot:	101020
Arm Package:	102026
Floor Plate:	104020
Closer (less all parts):	10
	12
	15
	16
Cement Case:	103000



Models 67 and 68 Uni-Check Floor Closers

Uni-Chek Closers are offset 3/4" from the heel of the door and 3/4" from the face of the door, are single acting and handed.



MODEL	DOOR SIZE	WEIGHT
67	3'0" - 3'4" x 7'0" x 2-1/4"	150 lbs.
68	3'5" - 4'0" x 7'0" x 2-1/4"	175 lbs.

Features

- Single acting—specify hand.
- Floor closers are fully concealed to maintain aesthetics of opening.
- Full weight of door is borne by closer, providing trouble-free, long life operation.
- Screws are in shear in floor closer installation and are less likely to pull out as hinge installation which is in tension.
- Frame stop required.
- Available non-hold-open (NHO), or automatic hold-open (AHO) at 85, 90, 100, 110, 120, or 180° (180° HO standard).
- Steel cement case.
- Closing speed adjustment.
- Can swing to 180°.
- Extended spindle available in 1/2" increments to 2". Standard clearance is 3/4".
- Standard top pivot: 180.
- Recommended intermediate pivot: 119.
- Available for fire door assemblies with F180 top pivot (prefix F).
- 20 minute applications suffix -20. Comes with 180-20 top pivot.
- Not available SC, DA, CWE
- For A.D.A. compliance of 5-pound opening force specify PH67.
- Finish: 605, 606, 612, 613, 625 and 626.

Ordering Information

Complete Uni-Chek Closers include:

Top Pivot:	180	(specify hand)
Arm Package:	652050	(specify hand)
Floor Plate:	654050	(specify hand)
Closer (less all parts):	67	(specify hand)
	68	(specify hand)
Cement Case:	653000	(specify hand)

Options available:

Intermediate Pivot:	119	(specify hand)
---------------------	-----	----------------

