

Parts and Accessories

Parts and Accessories

01030-PKG

Arm Spindle Washer.
(5 per package).

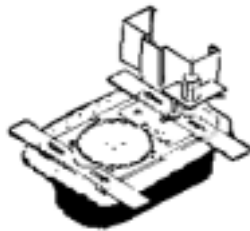


01244010-PKG

Arm Spindle Screw.
Not Shown.
(5 per package).

185

Quick Spotter Kit.
For positioning concealed floor closer cement cases during installation in wet cement. Includes spindle locator plate, spotter straps, screws and built-in level.



107004

Floor Plate Screw Kit.
10/24 — flat head (4 per pack).
Fits most floor closers.
Specify finish: 313, 605, 606, 612, 626,



107032

Adjusting screw/washer set
for center hung closer arms.
Specify finish: 313, 605, 606, 612,
625, 626.



275171

Adjusting wrench for
20, 25, 26, 27, 28, 30 and
40 Series Closers.



**46045-PKG and
46145-PKG**

46045-PKG—Arm plate shims for 28, 30 and 40
Series Closers.
.062 thick. Non-handed. (5 per pack).
46145-PKG—Arm plate shims for 28, 30 and 40
Series Closers.
.0187 thick. Non-handed. (5 per pack).



46445

Arm plate stud assembly
for 28, 30 and 40 Series
Closers. Non-handed.



107046

Cement case screw package for
concealed floor closers (except 50/51/53
Series). 1/4-20 flat head. (4 per pack).



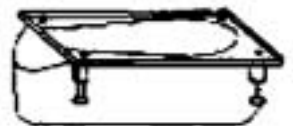
203000

Cast iron cement case for 20
Series Closers. Non-handed.



253000

Standard Cylolac cement case
for 25, 26, 27 and 28 Series
Closers. Non-handed.



253001

Cast iron cement case for
25, 26, 27 and 28 Closer families.
Supplied as standard on L27 and
H28 Closers. Non-handed.



103000

Cement case (metal) for 10, 12, 15 and 16 Series Closers. Non-handed.



303000 and 403000

303000—Cement case (metal) for 30 Series Closers. Non-handed.



403000—Cement case (metal) for 40 Series Closers. Non-handed.

653000

Cement case (metal) for 67 and 68 Series Closers. Handed. Shown as left and right hand.



012142/012144

Arm cap package for 20, 25 and 27 Arms. Handed, based on the hand of the arm. 012142 available in 605, 606, 612 and 613 finishes. 012144 available in 629 (good for 625 and 626) finish.



Note: Right hand shown on top.

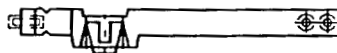
102026

Arm package for 10, 12, 15 and 16 Series Closers. Non-handed. Specify finish.



282020

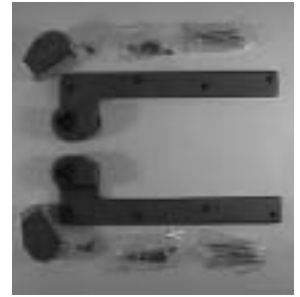
Arm package for G28 closer. Non-handed. Specify finish for alignment screws.



252050 and 252051

252050—3/4" standard arm package for 20, 25 and 27 Closers. Handed. Includes arm cap and screws. Specify finish: 313, 605, 606, 612, 625, 626.

252051—3/4" arm package for L27 Closers for lead lined doors. Screw holes straddle centered lead lining in the door. Handed. Includes arm cap and screws. Specify finish: 313, 605, 606, 612, 625, 626.



Note: Right hand shown on top.

252060

1-1/2" arm package for 20, 25 and 27 Closers. Handed. Includes arm cap and screws. Specify finish: 313, 605, 606, 612, 625, 626.



Note: Right hand shown on top.

262022

Arm package for H28 closer. Non-handed. Painted aluminum finish standard.



282026

Standard arm package for 28 closer. Non-handed. Specify finish for alignment screws: 313, 605, 606, 612, 625, 626.



282554

Arm package for 28-554 closers. Non-handed.



262587

Side load arm package for the H28 closer. Non-handed. Painted aluminum finish standard.



Floor Closers

302026

Arm package for 30/40 Series Closers. Non-handed. Specify finish for alignment screws: 605, 612, 625, 626.



652050

Arm package for 67 and 68 Series Closers. Handed. Specify finish: 605, 612, 625, 626.

Note: Right hand shown on top.



275062-PKG

Arm Bearing Washer. Triangular hole. Used for 20, 25 and 27 Closers. (5 per pack).



275065-PKG

Arm Bearing Washer (shim). Used for 20, 25 and 27 Closers. (5 per pack).



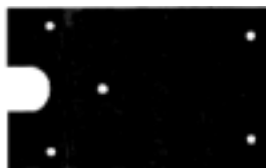
204050

Floor plate package for 20 Series Closers. Non-handed. Measures: 8-13/16" x 5-1/16" Specify finish: 605, 612, 625, 626.



254050

Floor plate package for 25 Series Closers. Non-handed. Measures: 9-7/8" x 6-1/8" Specify finish: 605, 606, 612, 625, 626.



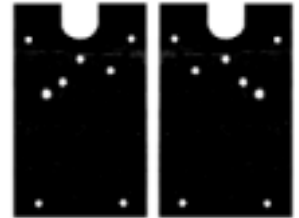
264020

Floor plate package for 26 Series Closers. Non-handed. Measures: 11-7/8" x 6-1/8" Specify finish: 605, 606, 612, 625, 626.



274750

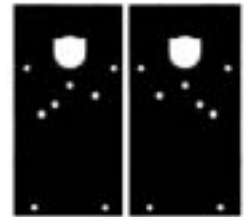
Floor plate package for 27S Series Closers. Handed. Measures: 9-7/8" x 6-1/8" Specify finish: 605, 606, 612, 613, 625, 626.



Note: Right hand shown on right.

284720

Floor plate package for 28S and 328S Series Closers. Handed. Measures: 11-7/8" x 6-1/8" Specify finish: 605, 606, 612, 613, 625, 626.



Note: Right hand shown on right.

304020 and 404020

304020—Floor plate package for 30 Series Closers. Non-handed. Measures: 15-1/8" x 5-1/2" Specify finish: 605, 612, 625, 626.

404020—Floor plate package for 40 Series Closers. Non-handed. Measures: 17-1/4" x 6-1/8" Specify finish: 605, 612, 625, 626.



104020

Floor plate package for 10, 12, 15 and 16 Series Closers. Non-handed. Measures: 8-7/8" x 4-1/2" Specify finish: 605, 612, 625, 626.



654050

Floor plate package for 67 and 68 Series Closers. Handed. Specify finish: 605, 612, 625, 626.



Note: Right hand shown at right.

4000301

50/51 Series Cyclocac cement case. Non-handed. Includes screws.



252057

3/4" Offset H27 bottom arm package. Handed. Includes arm cap and screws. Specify finish: 605, 606, 612, 613, 625, 626.



Note: Right hand shown on top.

222050 and 222050-HM

222050—Q27 Offset bottom arm package. Handed. Includes arm cap and mounting hardware. Specify finish: 605, 606, 612, 613, 625, 626.



Note: Right hand shown on top.

222050-HM—HM27 Offset bottom arm package. Handed. Includes arm cap and mounting hardware. Specify finish: 605, 606, 612, 613, 625, 626.

3252010

327/53 Series bottom arm/track package. Non-handed. Specify finish: 605, 606, 612, 613, 625, 626.



254545-PK

3/4" Offset hinge package for HM27 and HM51 Series closers. Field reversible. Designed for stock metal doors and frames with standard 4-1/2" hinge prep. Package includes three (3) ball-bearing bronze 3/4" offset hinges and screws. Specify finish: 605, 606, 612, 613, 625, 626. Also available for fire rated applications with stainless steel hinges. Contact us for details.



259000/259500

259000—Spindle shoulder collar. Specify finish: 605, 606, 612, 613, 625, 626.



259500—Spindle shoulder collar for L27, H28 & H40 Series. Specify finish: 605, 606, 612, 613, 625, 626.

Note: 259000 shown on the left.

41204-PKG

Thrust bearing for L27, H28 & H40 Series closers. One thrust bearing with washer per package.



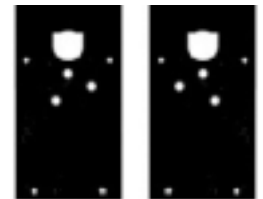
107075

50/51/53 Series cement case screw package. Package includes four screws and rectangular washers.



3274010

Floor plate package for 327 Series closers. Handed. Measures: 11-3/8" x 6-1/8". Specify finish: 605, 606, 612, 613, 625, 626.



Note: Right hand shown on right.

294750

Floor plate package for Q27 Series closers. Handed. Measures: 10-7/8" x 6-1/8". Specify finish: 605, 606, 612, 613, 625, 626.



Note: Right hand shown on right.

4000600-XXE

Floor plate package for 50/53 Series closers. Measures: 19-1/4" x 4-1/2". Specify finish: 605, 606, 612, 613, 625, 626.



Floor Closers

4000501-XXE

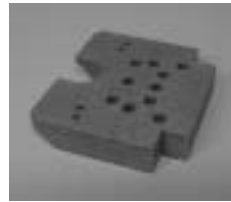
Floor plate package for 51 Series closers. Measures: 19-1/4" x 4-1/2". Specify finish: 605, 606, 612, 613, 625, 626.

Right hand shown on right.



73009

Filler block for Q27 Series closers. Sold individually. Two are required for a complete installation.



4000-023

Filler block for Q51 Series closers. Sold individually. Two are required for a complete installation.



Cover Pans

Also known as Terrazzo Pans, these ensure the aesthetics of a continuous floor line and can be used in lieu of a floor plate. A cover pan is filled with flooring material (terrazzo, marble, tile, etc.) and is then placed on top of the floor closer. They allow maintenance to the closer if a problem should arise.



You have a choice of material – stainless steel or brass – and need to specify the exact closer model, hand and depth if other than standard (7/8"). Extended spindles are required for any cover pan installation.

Spindle Adapter Packages

For 50/51 Series closers. One is required and included with each 50 or 51 Series closer. Available in extended lengths as shown below. Offset spindle packages include spindle, spindle & arm bearing washers and screw. Center hung spindle packages include the spindle, spindle washer and screw.

	MODEL	DESCRIPTION
	4010-XXA	Standard 50 Series spindle adapter package.
	4010-XXC	1/2" Extended 50 Series Spindle package
	4010-XXE	1" Extended 50 Series Spindle package
	4010-XXG	1-1/2" Extended 50 Series Spindle package
	4010-XXI	2" Extended 50 Series Spindle package
	4007-XXA	Standard 51 Series spindle adapter package.
	4007-XXC	1/2" Extended 51 Series Spindle package
	4007-XXE	1" Extended 51 Series Spindle package
	4007-XXG	1-1/2" Extended 51 Series Spindle package
	4007-XXI	2" Extended 51 Series Spindle package