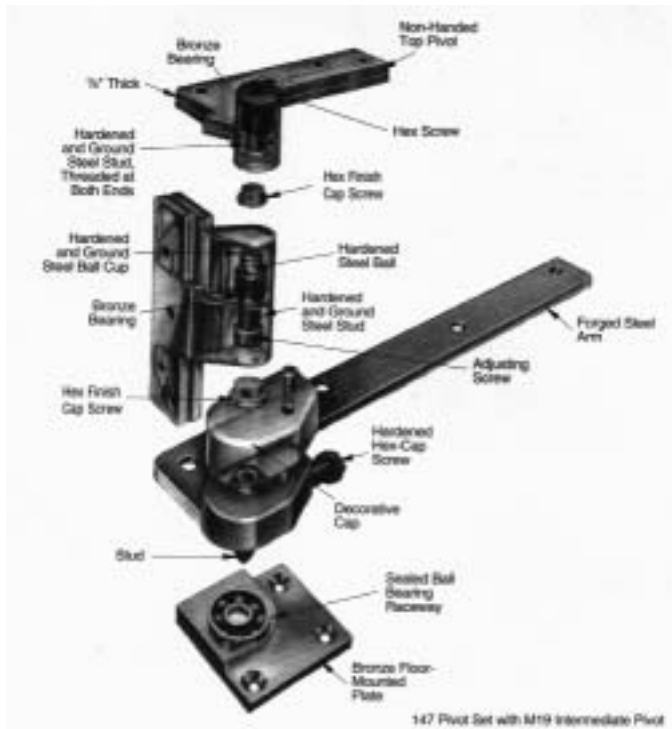


Exclusive Rixson Features


The industry's most complete line of pivots, designed and manufactured by a company whose founder was an architect. Many special pivot set layouts are available for unique applications.

Rixson pivots and pivot sets are recommended for high traffic interior or exterior doors, or any door where appearance is an important consideration. They are especially useful for extra heavy or lead lined doors.

Aesthetics

- Offset or center hung pivot sets are more attractive than alternate door hanging devices.
- Full floor-to-ceiling concealment is offered for center hung doors providing almost unlimited design flexibility.
- Extended spindles available to raise door above finished floor for complete concealment.
- Specification of heavy panels for door face with standard off-set pivot preparation is available.

Performance

- Full weight of door is borne by floor pivot, providing long pivot life and trouble-free operation.
- Screws are in shear in pivot set installations and are less likely to pull out as when in tension.

Safety

- Doors up to 1,750 pounds are accommodated, allowing all standard and heavy doors in a building to be hung by the same hanging means.
- Models are available for labeled fire doors and for lead lined doors.

Economy

- Vertical adjustment provides for field adjustment of the door if required. (On most models)
- Pivots provide longer life and more trouble-free operation than other door hanging devices.

Suggested Specification

All pivots and/or pivot sets shall be the product of one manufacturer. Sets as noted in hardware groups shall be matching in design for both labeled fire doors, lead-lined doors and regular doors. Pivots for 20-minute fire doors shall be non-ferrous and match the finish of adjacent hardware. Full height doors as noted in hardware groups are to have center-hung pivot with the top pivot pin concealed above the ceiling. All pivot sets are required to meet ANSI grade one standard as listed in ANSI 156.4 1980. Caps shall be hex type to increase security.

Finishes

Pivots are available in the following finishes unless otherwise noted: 605, 606, 612, 613, 625 and 626.

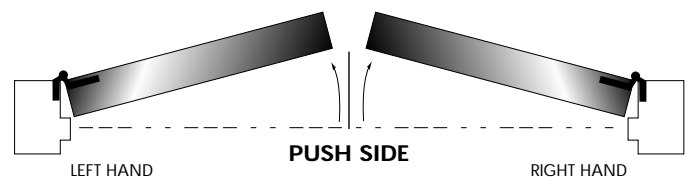
Special Accommodations

Rixson-Firemark offers a wide variety of Special Layouts to accommodate most any door and frame application. Some of the most frequently used include: longer pivot pins to extend center hung doors completely to the ceiling, angle pivots for hanging a door without a head frame, spring-loaded top pivot jamb portion for applications where standard center hung pivot cannot be used.

Handing

Pivots and pivot sets which are handed are supplied LH or RH only. The hand is always determined from the push side of a door. There are no reverse bevel designations for pivots.

To determine the hand of a door for ordering pivots or concealed closers, face the door from the side which swings away from you.



If it opens to the left, it's LH.

If it opens to the right, it's RH.

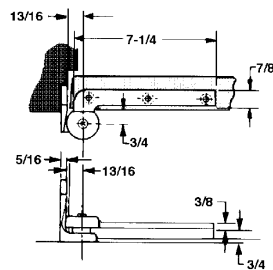
3/4" Offset Hung Pivot Sets

3/4" Offset Hung Pivot Sets

- All offset pivot sets are handed.
- All pivot sets include top and bottom pivots.
- 3/4" offset pivots locate the pivot point 3/4" from the heel edge of the door and 3/4" from the face of the door.
- Door edges must be beveled 1/8" in 2".
- All pivot sets are available with longer spindles in 1/2" increments up to 2".
- Door weights are based on use of an intermediate pivot.
- On fire rated door assemblies, pivot sets or components which are rated for fire doors are required.

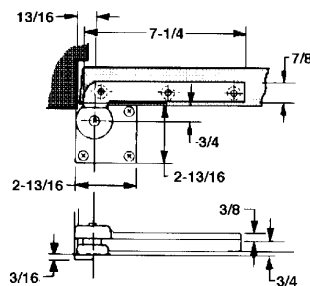
117-1/4

- For Interior Doors.
- Weight to 250 lbs.
- Sizes up to 3'8" x 8'0".
- Bottom pivot mortised into side jamb.
- Top pivot: Model 180.
- Intermediate pivot required.
- BHMA/ANSI NO: 07172/3530A (modified).
- Handed—specify swing of door.
- Finish: 605, 606, 612, 613, 625 and 626.



117

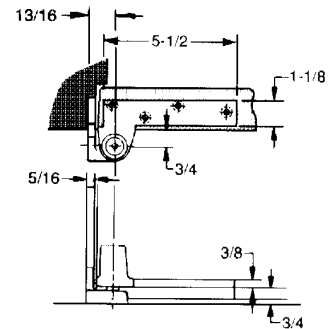
- For Interior Doors.
- Weight to 300 lbs.
- Sizes up to 4'0" x 8'0".
- Bottom pivot mortised into floor.
- Available for fire door assemblies up to three hours—specify **F117**.
- For 20-minute label suffix-20.
- Top pivot: Model 180.
- Intermediate pivot required.
- BHMA/ANSI NO: C07162/3530A (modified).
- Handed—specify swing of door.
- Finish: 605, 606, 612, 613, 625 and 626.



117 Pivot sets are available from stock with 1/2" or 1" extended spindles as an option. Other extension sizes are available to order. 117 Pivot sets are also available with Special Layout # 2125 as an option. See the Special Layouts section for more details.

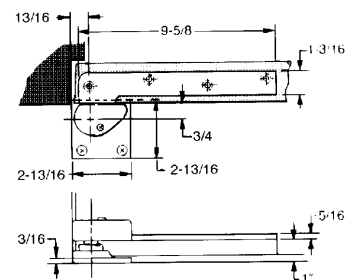
195

- For Exterior or Interior Doors.
- Weight to 450 lbs.
- Sizes up to 4'0" x 8'0".
- Bottom pivot mortised into side jamb.
- Pivot set can be vertically adjusted up to 3/16" after installation.
- Top pivot: Model 180.
- Intermediate pivot required.
- BHMA/ANSI NO: C07131/3530A (modified).
- Handed—specify swing of door.
- Finish: 605, 606, 612, 613, 625 and 626.



147

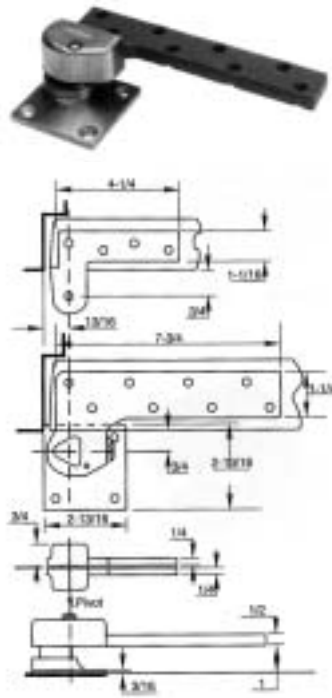
- For Exterior or Interior Doors.
- Weight to 600 lbs.
- Exterior sizes up to 3'6" x 7'0".
- Interior sizes up to 4'0" x 8'6".
- Bottom pivot mounts directly to floor.
- Uses same arm cover cap as 27 floor closer.
- Available for fire door assemblies up to three hours (ferrous material)—specify: F147.
- Top pivot: Model 180.
- Intermediate pivot required.
- Non-ferrous base metal.
- 3/4" offset.
- BHMA/ANSI NO: C07162/3530A (modified).
- Handed—specify swing of door.
- Finish: 605, 606, 612, 613, 625 and 626.



3/4" Offset Hung Pivot Sets

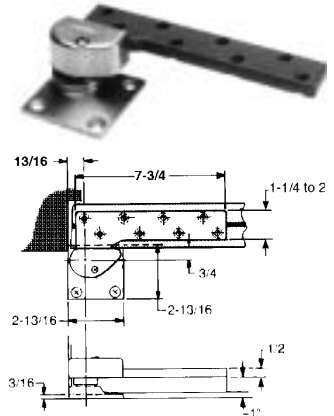
H147

- Exterior or Interior Doors
- Weight to 800 lbs.
- 3/4" offset (measured from centerline of pivot to face of door)
- Door Width up to 3'6"
- Standard top pivot H180 included
- Intermediate pivot required (M190)
- Bottom pivot mounts directly to floor
- Available for fire door assemblies up to three hours for 1-3/4" doors only -specify FH147.
- For 20-minute label suffix -20
- Designed to accommodate narrow dense doors where traffic is moderate
- Bottom pivot features roller bearing for greater load capacity
- Doors over 60" require the use of one intermediate pivot. Every additional 30" of door height warrants another intermediate pivot
- Furnished with wood and machine screws
- BHMA/ANSI NO: C07162 (modified)
- Doors will swing 180°, trim permitting
- Handed. Specify swing of door.
- Finish: 605, 606, 612, 613, 625 and 626.



L147

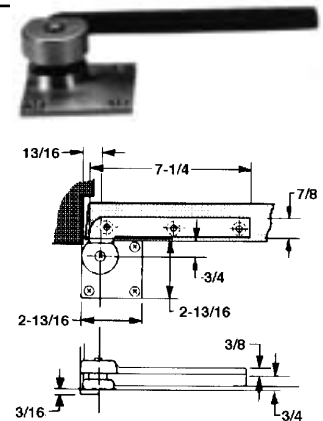
- For Lead Lined Doors.
- Weight to 1000 lbs.
- Sizes up to 4'0" x 8'0".
- Bottom pivot mounts directly to floor.
- Designed for lead lined doors with lead in the center of door.
- Screw holes straddle the lead lining.
- Available for fire door assemblies up to three hours for 1-3/4" doors only (ferrous material)—specify FL147.
- Available to accommodate door thicknesses 1-3/4", 2", 2-1/4", 2-1/2" or 3".
- Top pivot: L180.
- Intermediate pivot required.
- Non-ferrous base metal.
- 3/4" offset.
- BHMA/ANSI NO: C07111/3530B (modified).
- Handed — specify swing of door.
- Finish: 605, 606, 612, 613, 625 and 626.



L147 Pivot sets are available with Special Layout # 438 from stock as an option. This is for doors that have a 3/4" panel applied to the outside surface. See the Special Layouts section for more details.

L117

- For Lead Lined Doors.
- Weight to 1,750 lbs.
- Sizes up to 4'0" x 8'0".
- Bottom pivot mortised directly to floor.
- Designed for lead lined doors with lead in center of door.
- Screw holes straddle the lead lining.
- Available for fire door assemblies up to three hours for 1-3/4" doors only (specify FL117).
- Available to accommodate door thicknesses 1-3/4", 2", 2-1/4", 2-1/2" or 3".
- Top pivot: H180.
- Intermediate pivot required.
- Specify door thickness.
- BHMA/ANSI NO: C07111/3530B.
- Handed — specify swing of door.
- Finish: 605, 606, 612, 613, 625 and 626.

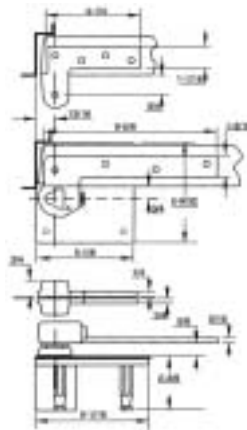


L117 Pivot sets are available with Special Layout # 438 from stock as an option. This is for doors that have a 3/4" panel applied to the outside surface. See the Special Layouts section for more details.

3/4" and 1-1/2" Offset Hung Pivot Sets

117-1/2

- For exterior or interior doors
- Weight to 650 lbs.
- Door Width up to 4'0"
- Standard top pivot Model 180 included
- Intermediate pivot required: M19
- Bottom pivot mortised into floor
- Available for fire door assemblies up to three hours (ferrous material) –specify F117-1/2. Intermediate pivot required by UL. Specify FM19
- For 20-minute label suffix –20
- Non-ferrous base metal
- Doors over 60" require the use of one intermediate pivot. Every additional 30" of door height warrants another intermediate pivot
- Furnished with wood and machine screws
- Doors will swing 180°, trim permitting
- BHMA/ANSI NO: C07121
- Handed – Specify swing of door
- Finish: 605, 606, 612, 613, 625 and 626.

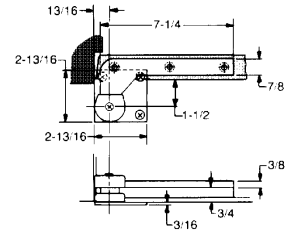


1-1/2" Offset Hung Pivot Sets

- All offset pivot sets are handed.
- All pivot sets include top and bottom pivots.
- 1-1/2" offset pivots locate the pivot point 3/4" from the heel edge of the door and 1-1/2" from the face of the door.
- 1-1/2" pivot sets are used to clear trim and provide additional clearance between doors and adjacent walls.
- These pivot sets allow decorative panels to be applied to the face of the door.
- Door edges must be beveled 1/8" in 2".
- All pivot sets are available with longer spindles in 1/2" increments up to 2".
- Door weights are based on the use of an intermediate pivot.
- On fire rated door assemblies, pivot sets or components which are rated for fire doors are required.
- *Note: The use of 1-1/2" offset pivots decreases the clear width of an opening and may effect code compliance.*

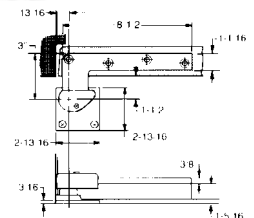
117x1-1/2"

- For Interior Doors.
- Weight to 150 lbs.
- Sizes up to 3'8" x 8'0".
- Bottom pivot mounts directly to floor.
- Available for fire door assemblies up to three hours—specify F117 x 1-1/2".
- Top pivot: 180 x 1-1/2".
- Intermediate pivot required.
- 1-1/2" offset.
- BHMA/ANSI NO: C07162/3530A (modified).
- Handed — specify swing of door.
- Finish: 605, 606, 612, 613, 625 and 626.



147x1-1/2"

- For Exterior or Interior Doors.
- Weight to 350 lbs.
- Exterior sizes up to 3'6" x 7'0".
- Interior sizes up to 4'0" x 8'0".
- Bottom pivot mounts directly to floor.
- Uses same arm cover cap as 27 floor closer.
- Available for fire door assemblies up to three hours—specify F147x1-1/2".
- Top pivot: 180 x 1-1/2".
- Intermediate pivot required.
- 1-1/2" offset.
- BHMA/ANSI NO: C07162/3530A (modified).
- Handed — specify swing of door.
- Finish: 605, 606, 612, 613, 625 and 626.

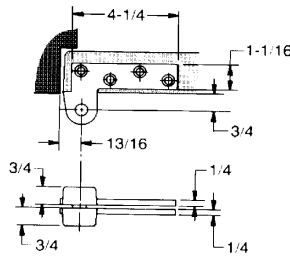


Offset Hung Top Pivots

- A top pivot is an integral part of the pivot set. A special top pivot may be required when unusual door or frame conditions are present.
- All offset top pivots are available in 3/4" offset and most are available in 1-1/2" offset.
- Door edges must be beveled 1/8" in 2".
- Unless otherwise noted, pivots are manufactured in nonferrous materials.
- On fire rated door assemblies, pivot sets or components which are rated for fire doors are required.

180

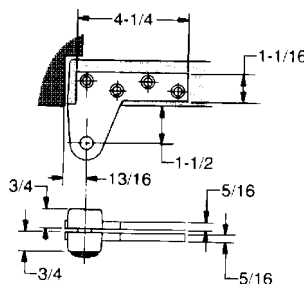
- Full mortise.
- Non-handed.
- Standard top pivot for most offset pivot sets and floor closers.
- Available for fire door assemblies (ferrous material) specify **F180**.
- Oil impregnated sintered bronze bearing.
- Non-ferrous base metal.
- 3/4" offset.
- Finish: **605, 606, 612, 613, 625 and 626.**



180 Pivots are available with the optional Special Layout # 102 from stock. This is for doors that have narrow frames, deep reveals or for other situations where the frame portion of a standard 180 is too large. See the Special Layouts section for more details.

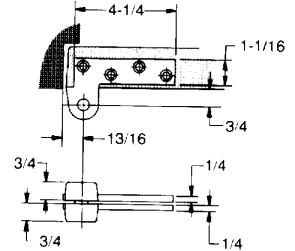
180x1-1/2"

- Full mortise.
- Non-handed.
- Standard top pivot for most 1-1/2" offset pivot sets and floor closers.
- Available for fire door assemblies (ferrous material) specify **F180-1-1/2"** offset.
- Oil impregnated sintered bronze bearing.
- Non-ferrous base metal.
- 1-1/2" offset.
- Finish: **605, 606, 612, 613, 625 and 626.**



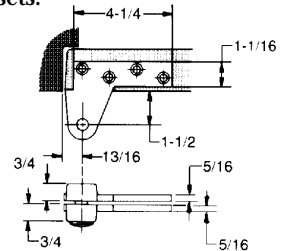
H180

- Heavy duty.
- Full mortise.
- Non-handed.
- Standard top pivot for high traffic, heavy duty offset pivot sets.
- Available for fire door assemblies (ferrous material)—specify **FH180**.
- Heavy duty needle bearings are standard.
- Non-ferrous base metal.
- 3/4" offset.
- Finish: **605, 606, 612, 613, 625 and 626.**



H180x1-1/2"

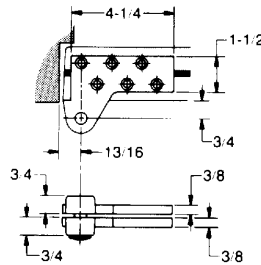
- Heavy duty.
- Full mortise.
- Non-handed.
- Standard top pivot for high traffic, heavy duty 1-1/2" offset pivot sets.
- Available for fire door assemblies (ferrous material) specify **FH180x1-1/2"**.
- Needle bearings are standard.
- Non-ferrous base metal.
- 1-1/2" offset.
- Finish: **605, 606, 612, 613, 625 and 626.**



Offset Hung Top Pivots

L180

- For lead lined doors.
- Full mortise.
- Non-handed.
- L-type pivot is recommended when straddled screw spacing is required to span lead in the middle of the door.
- Available to accommodate door thicknesses: 1-3/4", 2", 2-1/4", 2-1/2" or 3" (specify when ordering).
- Available for fire door assemblies (ferrous material) (1-3/4" doors only)—specify FL180.
- Non-ferrous base material.
- 3/4" offset.
- Finish: **605, 606, 612, 613, 625 and 626.**

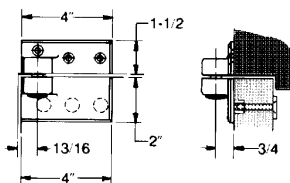


2-1/4" Door Shown

L180 top pivots are available with the optional Special Layout # 438 from stock. This is for doors that have a 3/4" panel applied to the outside surface. See the Special Layouts section for more details.

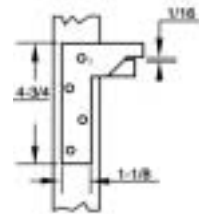
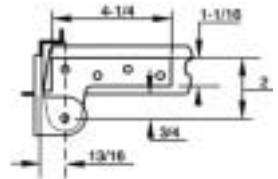
480

- Full surface.
- Handed—specify swing of door.
- Optional top pivot where door and jamb portion cannot be mortised.
- Designed for channel iron door frames and any door where thru bolting is advantageous.
- Available for fire door assemblies (ferrous material)—specify F480.
- Non-ferrous base metal.
- 3/4" offset.
- BHMA/ANSI NO: C07521
- Finish: **605, 606, 612, 613, 625 and 626.**



680

- Side Jamb Mounted Frame Portion
- Used where no frame exists above door, or where it is not possible to anchor pivot into the header of a frame
- Non-ferrous base metal
- 3/4" offset (measured from centerline of pivot to face of door)
- Side jamb portion can be surface mounted or mortised
- Handed - Specify swing of door
- Finish: **605, 606, 612, 613, 625 and 626.**

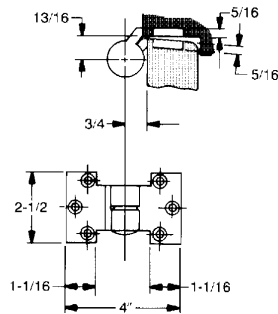


Intermediate or Side Jamb offset Hung Pivots
**Intermediate or Side Jamb
Offset Hung Pivots**

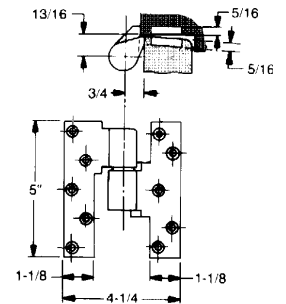
- Specified to maintain door alignment.
- Offset hung, cannot be used on center hung doors.
- On labeled fire door assemblies, NFPA 80 requires an intermediate pivot for every additional 30" or fraction thereof of door height over 60"—specify pivots of a ferrous metal.
- Door edges must be beveled 1/8" in 2".
- Unless otherwise noted, pivots are manufactured in non-ferrous materials.

119

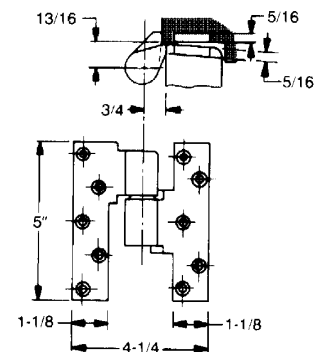
- Full mortise intermediate pivot.
- Handed—specify swing of door.
- Leaf height of 2-1/2" with no vertical load bearing capacity.
- Available 3/4" offset only.
- Non-ferrous base material.
- Use with 117 or 117-1/4 pivot sets, uniclosers or 127 closer.
- BHMA/ANSI NO: C07382/3525 (modified).
- Finish: **605, 606, 612, 613, 625 and 626.**


M19

- Full Mortise Intermediate Pivot.
- Handed — specify swing of door.
- Available in bronze or aluminum in all architectural or sprayed finishes.
- Available for fire door assemblies (ferrous material)—specify **FM19**.
- Non-ferrous base metal.
- 3/4" offset.
- BHMA/ANSI NO: C07321/3525.
- Finish: **605, 606, 612, 613, 625 and 626.**


M190

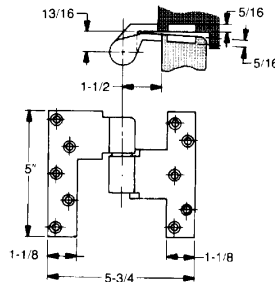
- Heavy duty.
- Full mortise intermediate pivot.
- Handed—specify swing of door.
- Used when frame condition does not allow standard top pivot.
- Available in bronze or aluminum in all architectural or sprayed finishes.
- Available for fire door assemblies (ferrous material)—specify **FM190**.
- Heavy duty needle bearing .
- Non-ferrous base metal.
- 3/4" offset.
- BHMA/ANSI NO: C07321/3525.
- Finish: **605, 606, 612, 613, 625 and 626.**



Intermediate/Side Jamb offset Pivots and Center Hung Pivot Sets

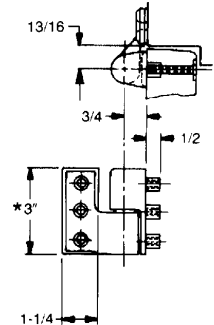
M19x1-1/2"

- Full mortise intermediate pivot.
- Handed—specify swing of door.
- Available in bronze or aluminum in all architectural or sprayed finishes.
- Available for fire door assemblies (ferrous material)—specify FM19x1-1/2".
- 1-1/2" offset.
- BHMA/ANSI NO: C07321/3525.
- Finish: **605, 606, 612, 613, 625 and 626.**



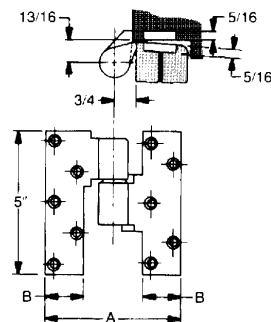
419

- Full surface intermediate pivot.
- Handed—specify swing of door.
- Flush door and frame applications only.
- Optional intermediate pivot where door and jamb portion cannot be mortised.
- Available for fire door assemblies (ferrous material)—specify F419.
- Available 3/4" offset only.
- Non-ferrous base metal.
- BHMA/ANSI NO: C07351.
- Finish: **605, 606, 612, 613, 625 and 626.**



ML19

- For lead lined doors.
- Full mortise intermediate pivot.
- Handed—specify swing of door.
- Designed for doors with lead in center of door.
- Screw holes straddle the lead lining.
- Available to accommodate door thicknesses 1-3/4", 2", 2-1/4", 2-1/2", or 3".
- Available for 1-3/4" fire door assemblies only—specify FML19.
- Non-ferrous material.
- BHMA/ANSI NO: C07311/3525B
- Finish: **605, 606, 612, 613, 625 and 626.**



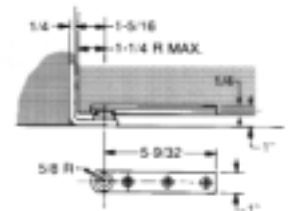
ML19 top pivots are available with the optional Special Layout # 438 from stock. This is for doors that have a 3/4" panel applied to the outside surface. See the Special Layouts section for more details.

Center Hung Pivot Sets

- All center hung pivot sets are double acting unless stopped by some means on the door frame.
- Not allowed for use on labeled doors and frames.
- Center hung sets are concealed to create a neat appearance.
- Intermediate pivots are not used with center hung pivot sets.
- Available with longer spindles in 1/2" increments up to 2".
- Centered in thickness of door.
- Not recommended for door heights in excess of 8'6"
- Doors do not return to center.
- Door must be radiused on pivot edge.

127-3/4

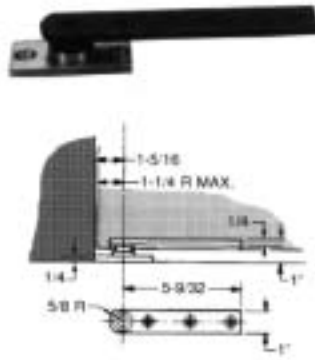
- For interior doors.
- Weight to 200 lbs.
- Sizes up to 3'6" x 8'6".
- Bottom pivot mortised into side jamb.
- Top pivot furnished: 320 light duty.
- BHMA/ANSI NO: C07042/3530 (modified).
- Finish: **605, 606, 612, 613, 625 and 626.**



Center Hung Pivot Sets and Top Pivots

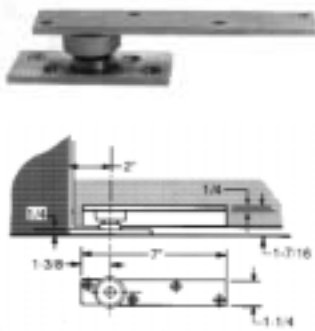
128-3/4

- For interior doors.
- Weight to 250 lbs.
- Sizes up to 3'6" x 8'6".
- Bottom pivot mounts directly to floor.
- Top pivot furnished: 320 light duty.
- BHMA/ANSI NO: C07032/3530 (modified).
- Finish: **605, 606, 612, 613, 625 and 626.**



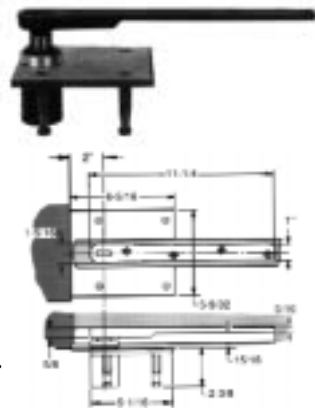
370

- For exterior or interior doors.
- Weight to 500 lbs.
- Sizes up to 4'0" x 8'6".
- Bottom pivot mounts directly to floor.
- Pivot set features sealed bearings for protection against weather and debris.
- Top pivot furnished: 340.
- BHMA/ANSI NO: C07032.
- Finish: **605, 606, 612, 613, 625 and 626.**



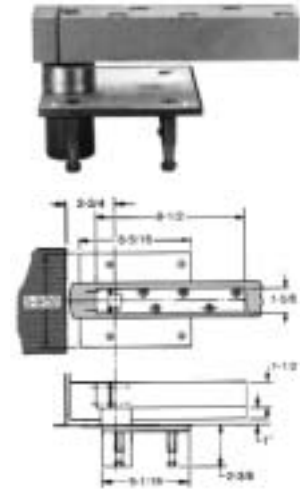
117-3/4

- For exterior or interior doors.
- Weight to 600 lbs.
- Sizes up to 4'0" x 8'6".
- Pivot set is fully concealed.
- Bottom pivot is mortised into floor and furnished with a cement case.
- Heavy duty bearings.
- Top pivot: 340.
- BHMA/ANSI NO: C07021/3530.
- Finish: **605, 606, 612, 613, 625 and 626.**



H117-3/4

- For exterior or interior doors.
- Weight to 1,000 lbs.
- Sizes up to 4'6" x 8'6".
- Pivot set is fully concealed.
- Bottom pivot is mortised into floor and furnished with a cement case.
- Standard set is equipped with end load arm for doors 2" thick or greater.
- Specify Special Layout 587 side load arm for doors 1-3/4" thick.
- Extra heavy duty bearings.
- Top pivot: H340.
- BHMA/ANSI NO: C07011/3530 (modified).
- Finish: **605, 606, 612, 613, 625 and 626.**



Center Hung Top Pivots

- The top pivots shown on this page and the next page are included with previously listed center hung pivot sets.
- All top pivots are available with longer pins in 1/4" increments to 3/4" to order.
- Manufactured from ferrous materials.

320

- Top pivot for Center Hung Doors.
- Standard top pivot for Models 127-3/4 and 128-3/4.
- Walking beam-type pivot. 1/2" diameter pivot pin with 3/4" engagement.
- Oil impregnated sintered bronze bearing.
- Completely concealed when door is closed.
- BHMA/ANSI NO: C06013/3500.
- Finish: **605, 606, 612, 613, 625 and 626.**

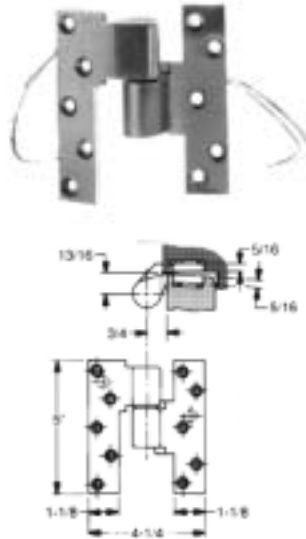


Electrified Pivots and Special Application Pivot
Electric Pivots

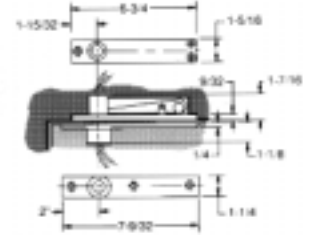
- Non-load bearing.
- Specified in installations requiring power transfer through the door.

E-M19

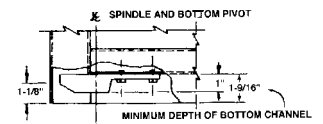
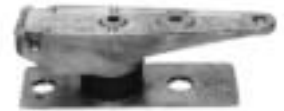
- Offset hung electric pivot for power transfer.
- Handed—specify swing of door.
- Product features and options identical to Model M19.
- Standard with four wires, six wires maximum.
- 24 gauge wire is rated at 2 amps for low voltage, class II wiring applications.
- Wires are color coded for easy installation.
- Available in non-ferrous metal for fire door assemblies—specify **E-FM19-4** (four wires).
- Available UL Listed for applications requiring Class I wiring (2 wire only)—specify E-M19U.
- 3/4" offset.
- Finish: **605, 606, 612, 613, 625 and 626.**


E-H340

- Center hung top pivot for power transfer.
- Non-handed.
- Product features and options identical to Model H340.
- Available with two or four wires. Two wire is 18 gauge, four wire is 22 gauge.
- Wires are stranded and color coded for easy installation.
- Wire is rated at 3 amps continuously. Used for Class II wiring applications.
- 3/4" offset.
- Finish: **605, 606, 612, 613, 625 and 626.**


217 Bottom Pivot

- Bottom Pivot used with overhead concealed closers.
- Door slides on from end.
- Comes standard with all 700, 800 closers and M, MW, and W608's.
- Cannot be extended.
- 200 pounds maximum door weight.
- Finish: Aluminum.



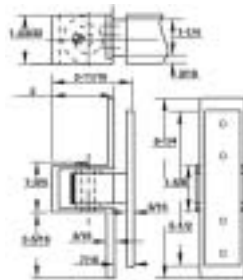
Special Applications/Layouts

Special Applications

Rixson offers a wide variety of Special Layouts to accommodate most any door and frame application. Some of the most frequently used include: longer pivot pins to extend center hung doors completely to the ceiling and angle pivots for hanging a door without a frame header where a standard center hung pivot cannot be used. Contact us for detailed information on Special Layouts for Pivots and Pivot Sets.

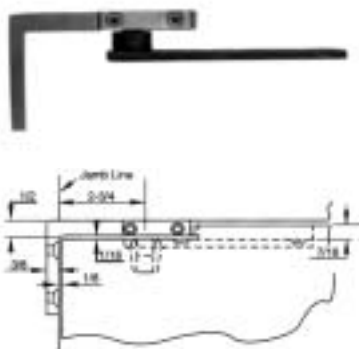
F519

- Pocket Door Pivot
- Full mortise, non-handed pivot for pocket door applications
- Heavy-duty steel pivot with ball bearings
- Allows doors to swing 90°
- Minimum three pocket pivots per door
- Doors over 80" in height require four pocket pivots. Every additional 30" of door height warrants another pocket pivot
- UL listed for all labeled fire-door assemblies up to and including 3 hours
- ANSI 156.1 A8911
- Non-Handed
- Finish: **605**, **606**, **612**, **613**, **625** and **626**.



Angle 3

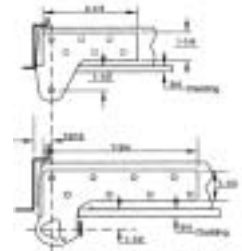
- For center hung applications only
- Used where no frame exists above door, or where it is not possible to anchor pivot into the header of a frame
- Brass construction with oilite bearing
- Furnished with 340 door portion
- Handed to keep installation plate to the inside of a room or building. Specify swing of the door.
- Finish: **605**, **606**, **612**, **613**, **625** and **626**.



Special Layout 438

Application

- Exterior or Interior Doors
- Weight to 500 lbs.
- Door Width up to 4'0"
- Handed – Specify swing of door.



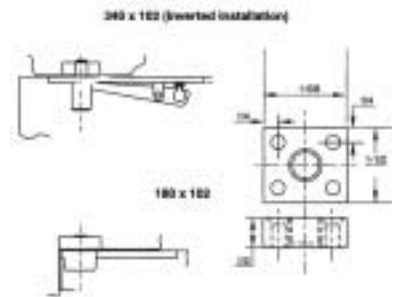
Description & Features

- Available with **L147** and **L117** pivot sets as well as the **L180** and **ML19** pivots
- For use on doors with 3/4" cladding applied to the pull side of a door
- For cladding greater than 3/4", contact us
- Intermediate pivots are required. Specify **ML19-SPLO-438**
- Finish: **605**, **606**, **612**, **613**, **625** and **626**.

Special Layout 102

Description & Features

- Used on special frame conditions, where standard frame portion is too large
- Example: Deep reveals where door portion of **180** is used with **102**
- May also be used with **340** center hung top pivot
- An Option for narrow doors and doors that use overhead stop or holders
- Finish: **605**, **606**, **612**, **613**, **625** and **626**.



Special Layout 2125

Application

- Interior Doors
- Weight to 300 lbs.
- Door Width up to 4'0"
- Handed – Specify swing of door.

Description & Features

- Available with **117** pivot sets
- For use on doors that extend further from the frame than normal with an overall offset from the frame of 1-1/2"
- Supplied with a standard 180 pivot door portion and a 180-1/2 frame portion
- Finish: **605**, **606**, **612**, **613**, **625** and **626**.

